



All the
power you need

EBit 60



By working with doctors and medical professionals globally for 20 years, Chison is pleased to debut its latest portable ultrasound : the EBit 60.

The EBit provides all the power you need for today's challenging clinical environment, yet remain ultra-portable, ultra-affordable. With it's cutting-edge imaging technologies, precise and intuitive workflow, ergonomic and eco-friendly design, versatile transducers for all applications from top to toe, we firmly believe the EBit to be the very best portable ultrasound in its class today.

Mobility

Innovative Design

- Light Weight(7.5Kg)
- 15" LED (rotatable 0°-30°)
- Removable battery, 120 minutes in active mode
- Dual transducer ports
- Built-in probe holders
- Ports: USB, LAN,VGA, DVI, Video, Remote
- Ergonomic trolley (accessory box, printer & probe holders)
- Theft-proof lock

Clinic Versatility

A complete solution for ultrasound diagnosis

- Cardiovascular
- Radiology
- Internal Medicine
- Small parts
- General imaging
- Vascular
- Intensive care
- Emergency
- MSK



Advanced

Q-flow

- This adaptive color detection technology can automatically adjust the assessment of color signal and noise according to different tissues.
- As a result, color sensitivity of low-velocity flow is greatly enhanced.

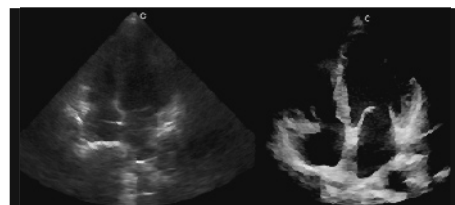


OFF

ON

FHI

- An innovative harmonic technology that using different transmission and receiving methods for different body sized patients, to maximize the resolution without losing the penetration.
- Better than traditional THI and phased harmonic which compromise the penetration.
- This greatly helps to improve diagnostic confidence on big patients.



OFF

ON

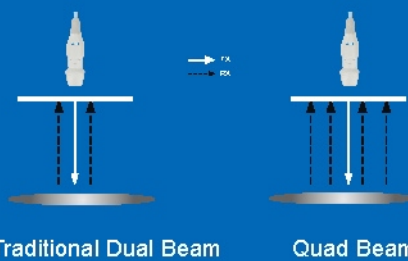


Technologies



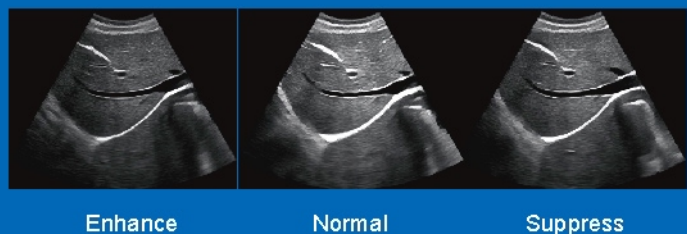
Q-beam

- Compared to the traditional dual-beam, EB it uses quad-beam to receive signal, thus doubles the volume of signal received as well as the frame rate.
- Higher frame rate ensures better diagnostic confidence and efficiency.

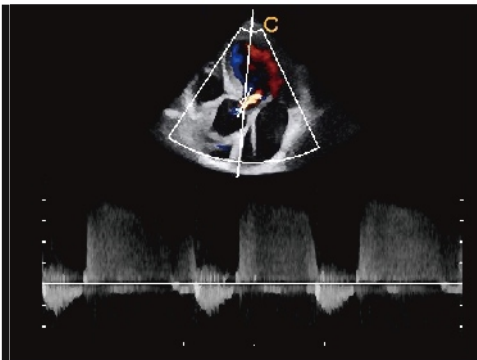


X-contrast

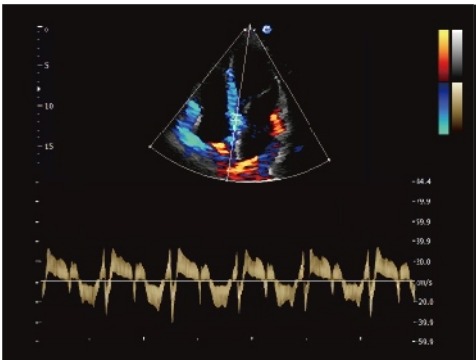
- Contrast resolution can be set at 3 different levels according to the tissue difference.
- Activated by one key: Enhance, Normal, Suppress.



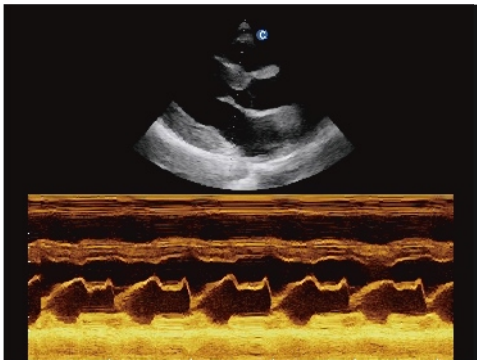
Confidence for **Diagnose**



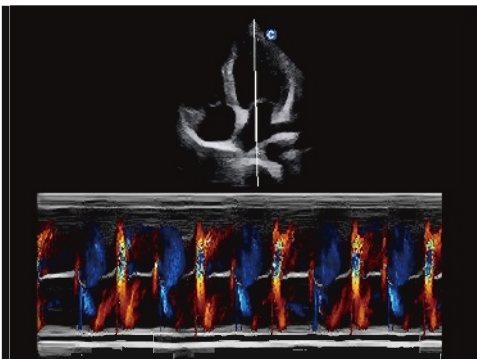
Aorta valve regurgitation, CW Mode



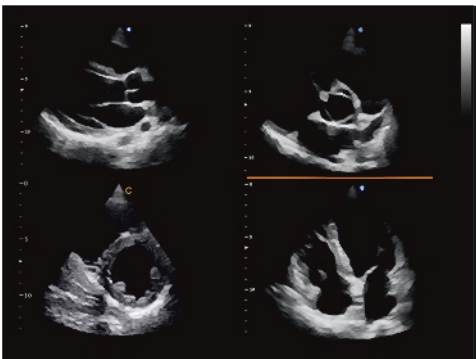
TDI, PW Mode



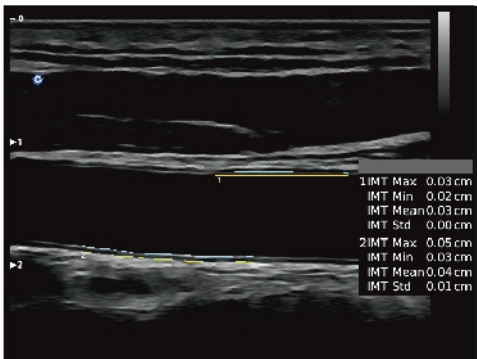
LV Long Axis, M Mode



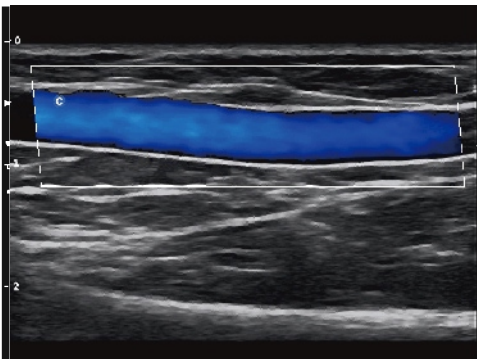
Apical Four Chambers, Color M Mode



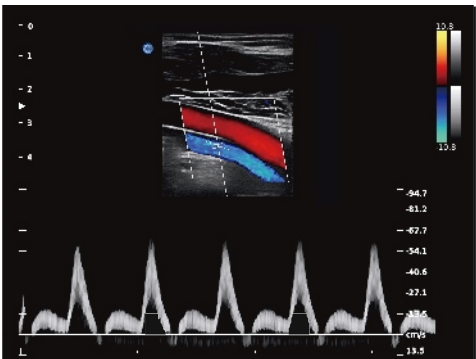
Cardiac, 4B Mode



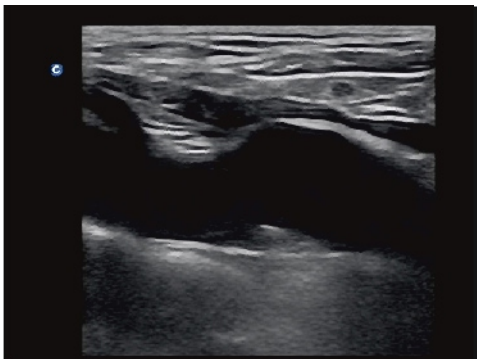
AUTO IMT



Basilic Vein, C Mode



Popliteal Artery, D Mode



Carotid Plaque, B Mode



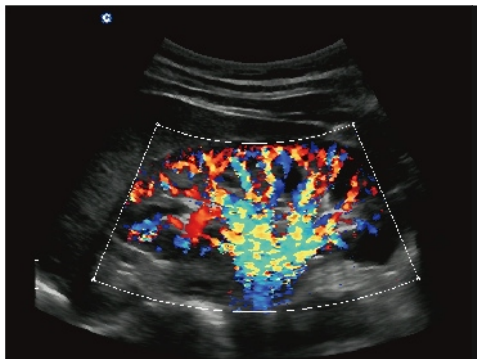
Uterus, B Mode



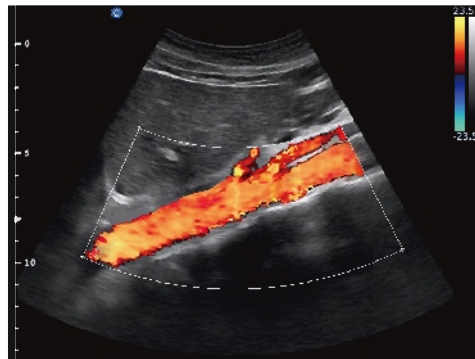
Liver, B Mode



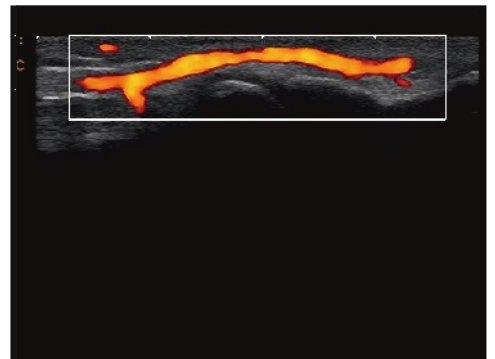
Fetal Heart, B Mode



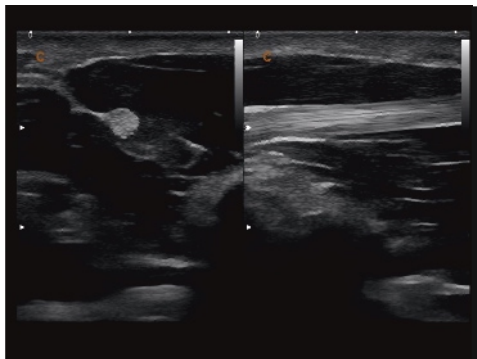
Kidney, C Mode



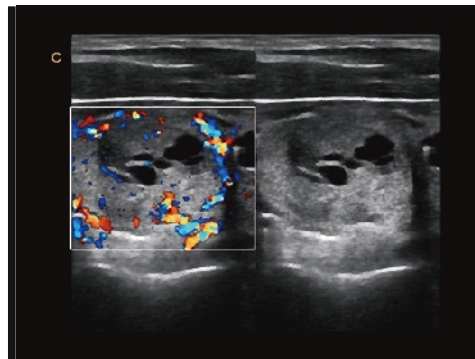
Aorta Artery, C Mode



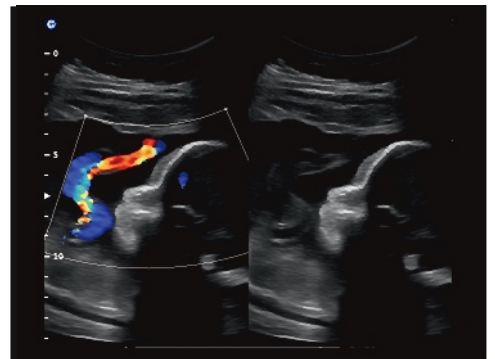
Finger Vessel, CPA Mode



Primary flexor tendon , 2B Mode



Thyroid multiple adenomas, B/BC Mode



Umbilical Cord, B/BC Mode



All the power you need



2.0MHz-6.8MHz Convex
C3-E



4.0MHz-15.0MHz Linear
L7-E



7.0MHz-18.0MHz(With FHI) Linear
L12-E



4.0MHz-15.0MHz Linear
L7W-E



1.5MHz-5.3MHz Phased array
P3-E



2.0MHz-8.0MHz Phased array
P6-E



4.0MHz-12.0MHz Transvaginal
V6-E



4.0MHz-15.0MHz Transvaginal
V7-E



4.0MHz-15.0MHz Trans Rectal
L7R-E



2.0MHz-6.8MHz Micro-Convex
MC3-E



4.0MHz-12.0MHz Micro-Convex
MC6-E



4.0MHz-10.7MHz Micro-Convex
MC5-E

CHISON MEDICAL IMAGING CO., LTD.

Sales & Service Contact Address:

No. 9 Xin Hui Huan Road, New District, Wuxi, Jiang Su Province, China 214028

TEL: 0086-510-85310583 / 85310837 FAX: 0086-510-85310726 EMAIL: export@chison.com.cn

We reserve the right to make changes to this catalogue without prior notice.
Please contact our local dealer for the latest information.